

## Features

700 LX Series High-Reach Demolition machine can be equipped with purpose-built booms that reach up to 110-feet and can carry up to 8,000 lb. work tools for demolishing tall structures.

Standard second member boom can be mounted in straight or curved configurations for working at ground level to allow additional application versatility.

Stub boom with transport joint and hydraulic quick-connects for ease in transportation and assembly.

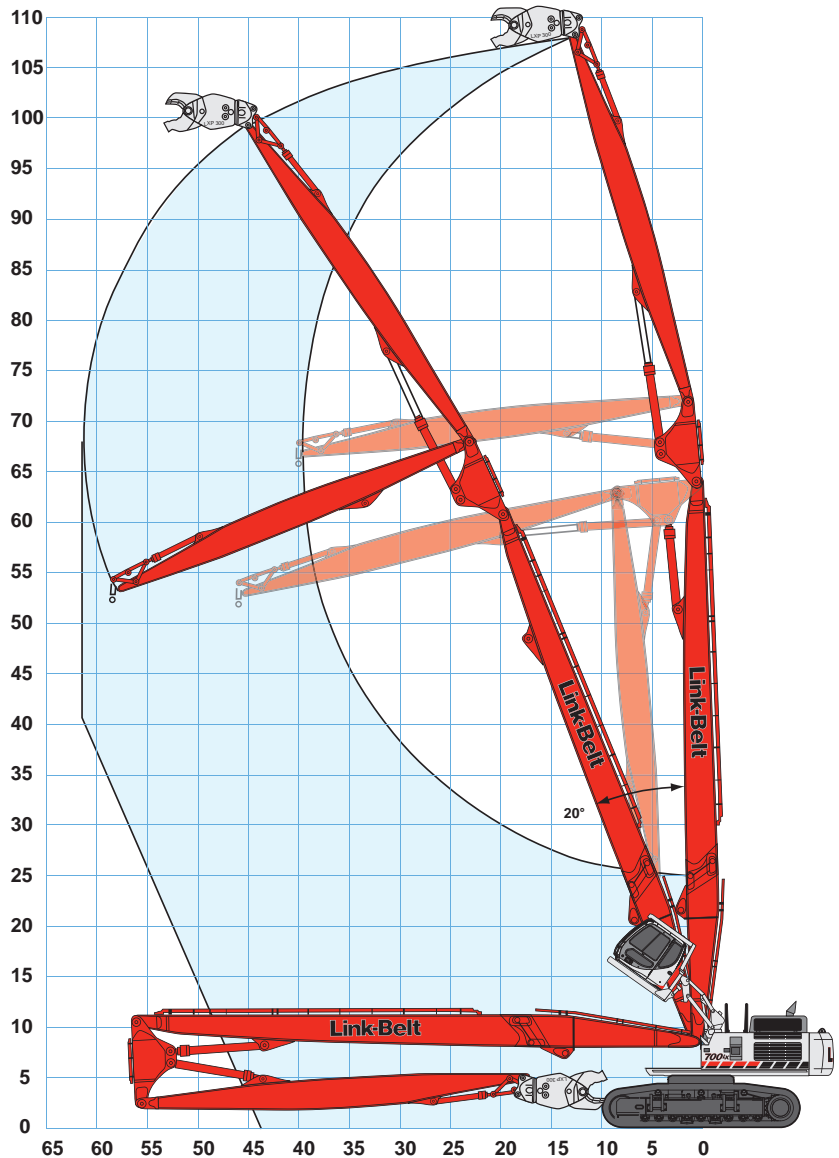
Cab with bullet proof laminated Lexan® glass roof/front window and ROPS/FOPS guarding provide maximum operator protection. Hydraulic raise-and-tilt works independently for optimum viewing angles: 7-foot raise; 35-degree tilt.

Optional boom mounted video camera with in cab color monitor for easier/safer operation - includes audio.

Selectable work modes to match applications, including Free Swing and control pattern changer to meet operator preference. Standard single pedal straightline travel.

Base unit equipped with heavy-duty catwalks, belly pans, swivel guard and travel motor covers to minimize damage from jobsite debris. Optional, full-length track guards available.

Custom 52-foot drop deck trailer with boom transport cradle can also haul work tools such as processors and shears.



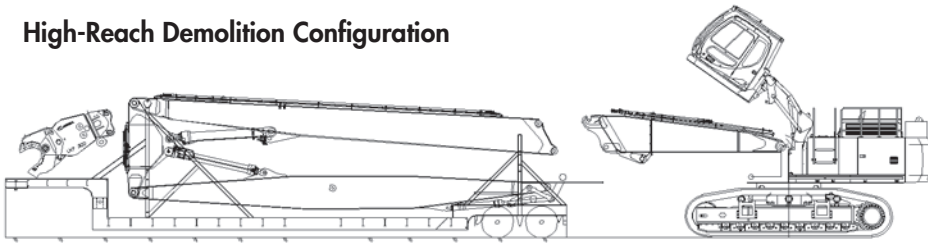
Optional dust suppression system with dual nozzles mounted at end of boom can be adjusted from fine mist to straight stream. Electronically controlled from in cab - easily connects to fire hydrants for water supply.

Standard hydraulic-driven, reversible fan for cleaning out dust from the radiator and oil cooler.

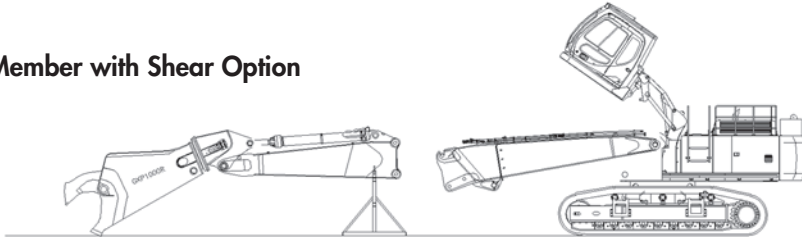
Optional auto-lube system cuts maintenance time by greasing all lubrication points along entire length of boom - excluding work tool.

Additional counterweights and reinforcement.

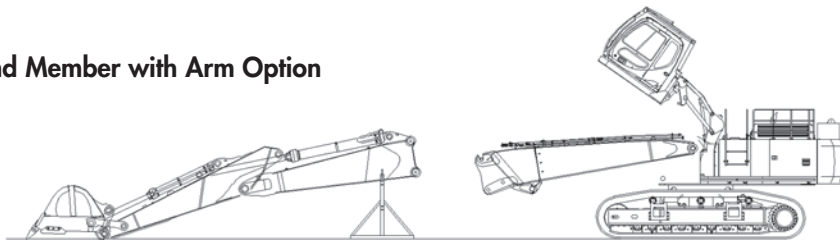
## High-Reach Demolition Configuration



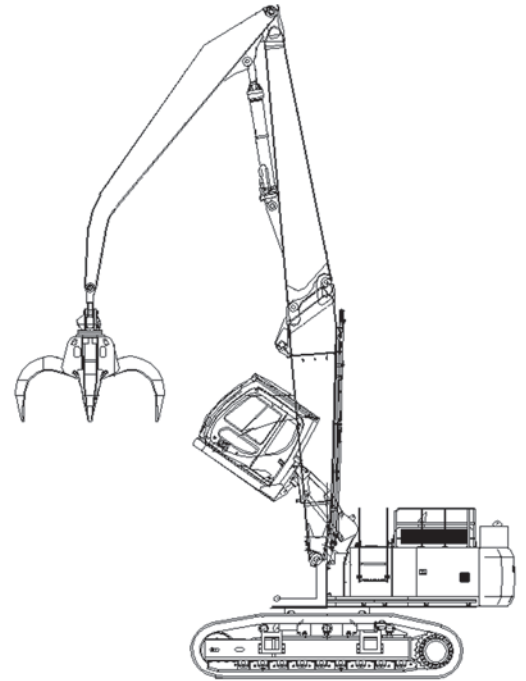
## Second Member with Shear Option



## Second Member with Arm Option



## Material Handling Configuration



## Standard Equipment

- 463 hp Tier III certified Isuzu diesel engine with electronic control
- Inte-LX<sup>®</sup> computer control system
- Illuminated LCD service monitor with on-board self-diagnostic system
- Auto idle start
- Auto engine warm-up
- One-touch idle and auto-idling system
- Selectable work modes
- Free Swing control
- Cushioned attachment control
- Auto power-up mode
- Auto power swing
- Control pattern changer
- ROPS/FOPS cab guard with laminated Lexan<sup>®</sup> glass - front and top
- KAB<sup>®</sup> 515 sliding/reclining suspension seat with adjustable arm rests and lumbar support, seat belt
- 3-position tilting consoles with 4th position on left console for entering and exiting the cab - also serves as hydraulic lock-out
- Gate lock and gate lock lever for hydraulic lock-out

- Climate control A/C and heat
- 12-volt accessory outlet
- Single pedal straightline travel, travel alarm
- AM/FM stereo radio, horn, lighter, floor mat, interior lighting, coat hook storage compartment, mirrors, digital clock, hour meter
- Common key for ignition, cab door, service doors, tool box, engine hood and fuel cap
- Stub boom with transport joint
- Second member boom
- Auxiliary hydraulics with rotate circuit
- Hydraulic quick-connects
- Boom and arm holding valves
- Integral cylinder cushioning
- Nephron<sup>®</sup> hydraulic filtration system
- Hydraulically-driven, reversible cooling fan
- Heavy-duty catwalks, belly pans, swivel guard and travel motor covers
- Hand rails both sides
- Long undercarriage with sealed and lubricated track

## Options

- High-reach booms to 110-feet
- Material handling booms to 65-feet
- Boom transport cradle
- Hydraulic cab positioning system with tilt and/or raise
- Boom camera with in-cab monitor
- Dust suppression watering system
- Auto-lube
- Drop deck trailer
- Arms
  - 9' 10" (3.0 m)
  - 11' 8" (3.55 m)
  - 13' 6" (4.11 m)
  - 16' 5" (5.0 m)
- Full-length track guards
- Track
  - 29.5" (750 mm) 2-Bar Grouser
  - 35.5" (900 mm) 3-Bar Grouser